



Eurotec Finishing Systems Limited
Unit 4 Lockflight Buildings, Wheatlea Industrial Estate,
Wigan WN3 6XR

Phone: 01942 829 111 Fax: 01942 820 491

<http://www.eurotecfinishing.com> e-mail : enquiries@eurotecfinishing.com

LARGE FLUIDISED BED

INSTRUCTION MANUAL

DOCUMENT:	Large Fluidised Bed - <i>Manual</i>
DATE ISSUED:	6 September, 1999
ISSUE NUMBER:	1

CAUTION

Read this manual completely before installing and operating the equipment.

Ensure all safety instructions and procedures are correctly followed and that all operators are fully trained.

IMPORTANT: *All other manuals relevant to components and equipment of the installation must be followed.*

CONTENTS

- 1. Title**
- 2. Caution**
- 3. Contents**
- 4. Fluidised Beds**
- 5. Specification**
 - *Pneumatic Data*
 - *General Data*
- 6. Assembly Drawings and Parts Lists**

FLUIDISED BEDS

The large Eurotec fluidised beds are designed to cater for large scale automated production with facilities for automatic level control using reclaimed and virgin powder. Features of the range include:-

Fluidised Bed (Volume in Litres)	Approx. Max. Powder (Weight in Kg's.)	FEATURES
100	50	<p>Up to 10 top feed venturies.</p> <p>Hinged lid for manual filling.</p> <p>Automatic filling and level control – optional.</p> <p>Level sensing - optional.</p> <p>Optional mounting at low level on own wheels or high level on mobile stand.</p> <p>Dump valve fitted when high level mounted.</p> <p>Rectangular with large tile area for ease of fluidisation.</p>
200	100	<p>Up to 14 top feed venturies.</p> <p>Hinged lid for manual filling.</p> <p>Automatic filling and level control – optional.</p> <p>Level sensing - optional.</p> <p>Optional mounting at low level on own wheels or high level on mobile stand.</p> <p>Dump valve fitted when high level mounted.</p> <p>Rectangular with large tile area for ease of fluidisation.</p>

SPECIFICATION



Pneumatic data

Input air pressure

0 – 60 p.s.i.

Input air conditioning

Oil free to 0.1 p.p.m. and dry to 1.3 g/cubic Nm

Input connection

¼" BSP parallel thread c/w nut and olive for connection of 8.0 mm (5/16") OD tubing.

General data

Capacity

100 litre fluidised bed – 50 kg (110 lbs) maximum powder weight

200 litre fluidised bed – 100 kg (220 lbs) maximum powder weight

Dimensions

Weight:-

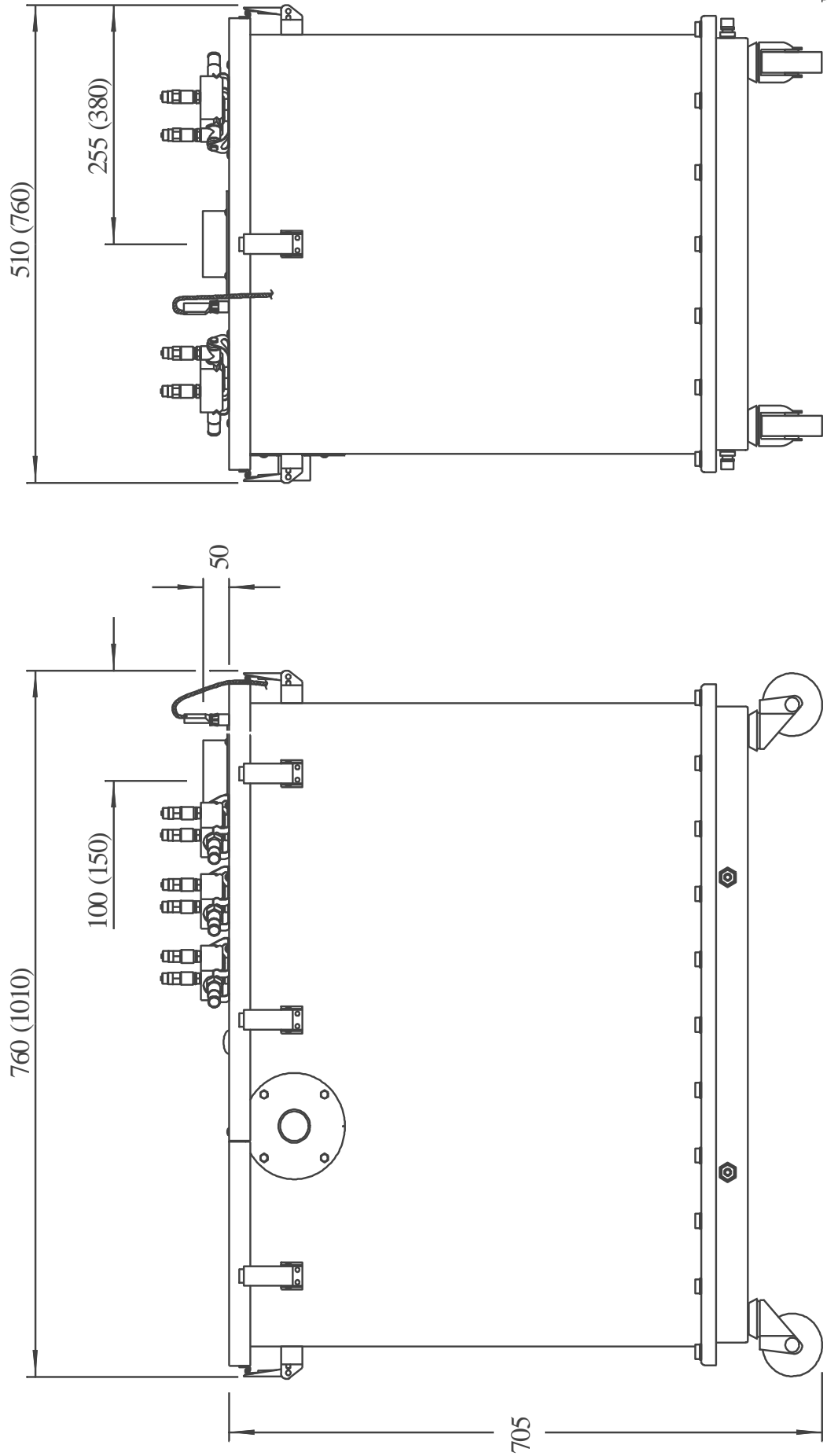
Floor area:- 760 mm wide x 510 mm deep = 0.39 square metres

Total size:- 760 mm wide x 510 mm deep x 705 mm high

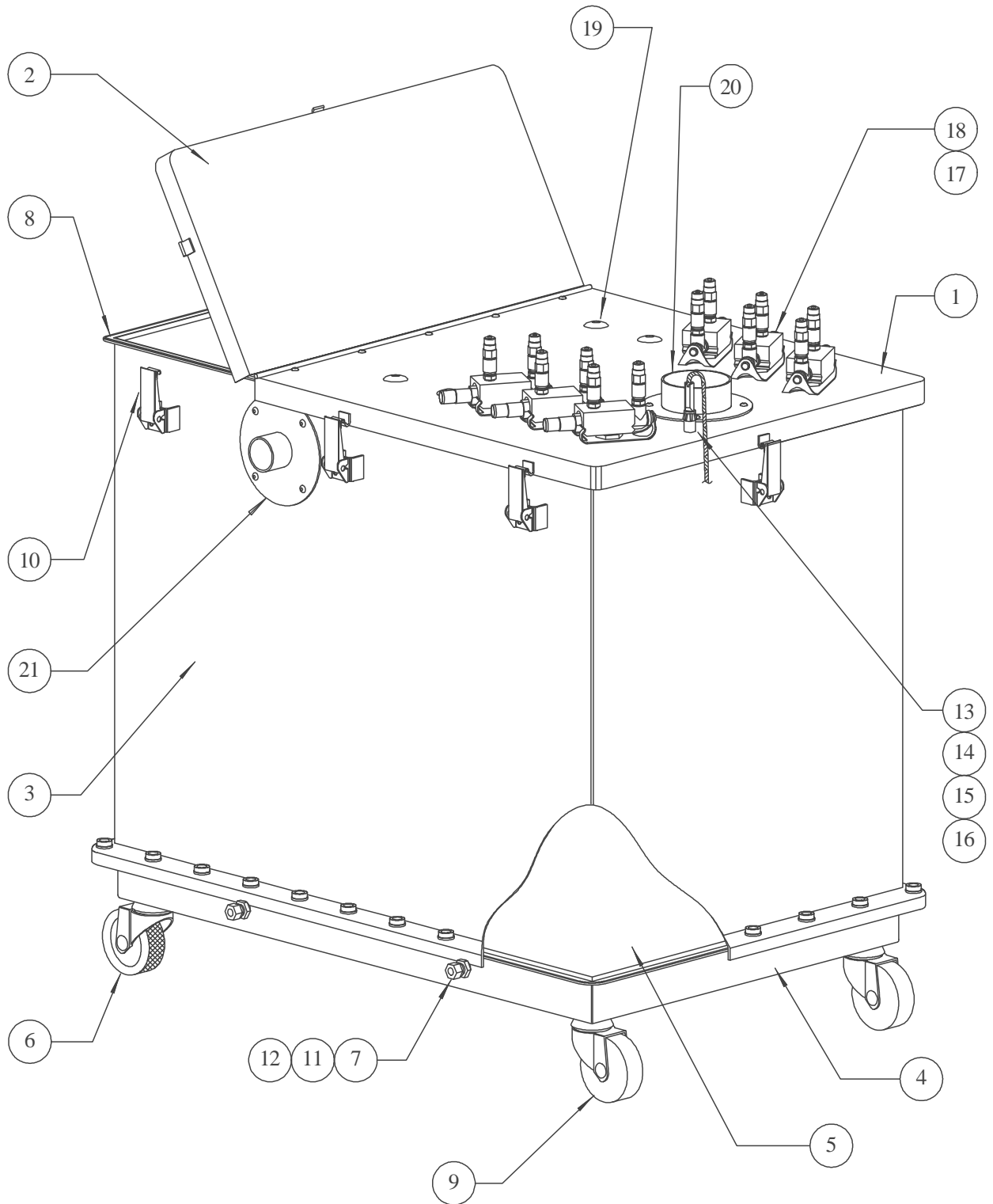
ASSEMBLY DRAWINGS & PARTS LISTS

Fluidbed 100L (200L) Overall Dimensions

Illustration No. 6000171



100L/200L Fluid Bed General Assembly
Part No. 2055002/2054002
Illustration No. 6000170



100L Fluid Bed
Part No. 2055002
PARTS LIST



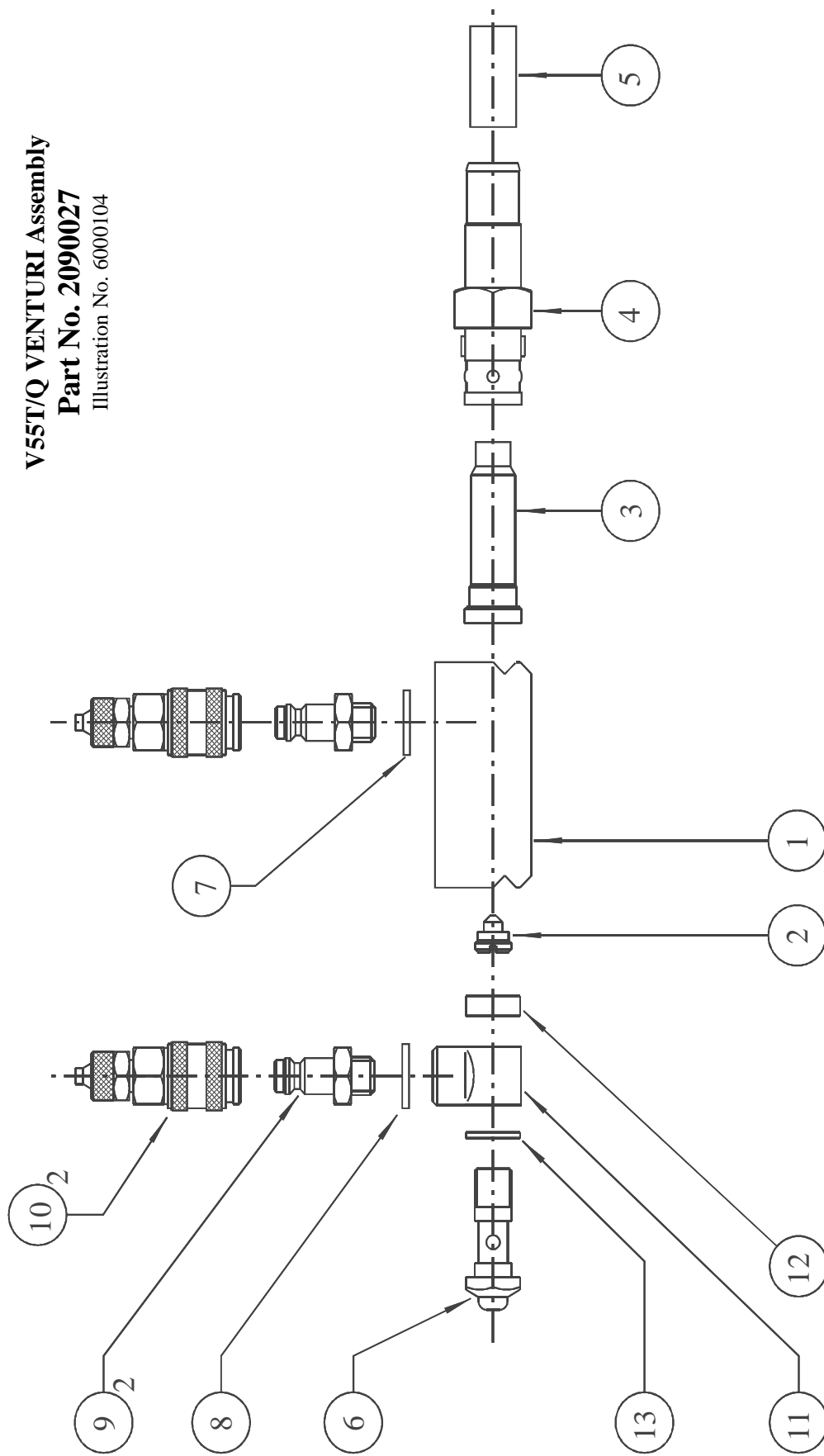
Item	Part No.	Description	Qty
1	2055028	Lid, Venturi Mounting	1
2	2055029	Lid, Access	1
3	2055026	Body	1
4	2055027	Plenum	1
5	9000167	Fluidising Tile	1
6	9000064	Castor, Conductive	1
7	9000841	Sealing Washer	4
8	9000070	Neoprene Sealing Strip	3m
9	9000065	Castor, Rubber	3
10	9000145	Latch	8
11	9000192	Straight Connector	4
12	9001028	Nut	4
13	9001064	Braid, 10 amp	0.1m
14	9001075	Eyelet	2
15	9000113	Earth Terminal	1
16	9000114	Connector Plug	1
17	2090013	Venturi Assembly (6mm air fittings)	6
or	2090014	Venturi Assembly (8mm air fittings)	6
18	2090030	Venturi Mounting Kit	6
19	9000302	Blanking Plug	4
20	2054022	75mm Spigot	1
21	2054024	37mm Spigot	1
or	2054023	Blanking Disc	1-2

200L Fluid Bed
Part No. 2054002
PARTS LIST



Item	Part No.	Description	Qty
1	2054012	Lid, Venturi Mounting	1
2	2054013	Lid, Access	1
3	2054011	Body	1
4	2054010	Plenum	1
5	9000167	Fluidising Tile	1
6	9000064	Castor, Conductive	1
7	9000841	Sealing Washer	4
8	9000070	Neoprene Sealing Strip	3m
9	9000065	Castor, Rubber	3
10	9000145	Latch	8
11	9000192	Straight Connector	4
12	9001028	Nut	4
13	9001064	Braid, 10 amp	0.1m
14	9001075	Eyelet	2
15	9000113	Earth Terminal	1
16	9000114	Connector Plug	1
17	2090013	Venturi Assembly (6mm air fittings)	6
or	2090014	Venturi Assembly (8mm air fittings)	6
18	2090030	Venturi Mounting Kit	6
19	9000302	Blanking Plug	4
20	2054022	75mm Spigot	1
21	2054024	37mm Spigot	1
or	2054023	Blanking Disc	1-2

V55T/Q VENTURI Assembly
Part No. 2090027
 Illustration No. 6000104



V55T/Q VENTURI Assembly
PARTS LIST

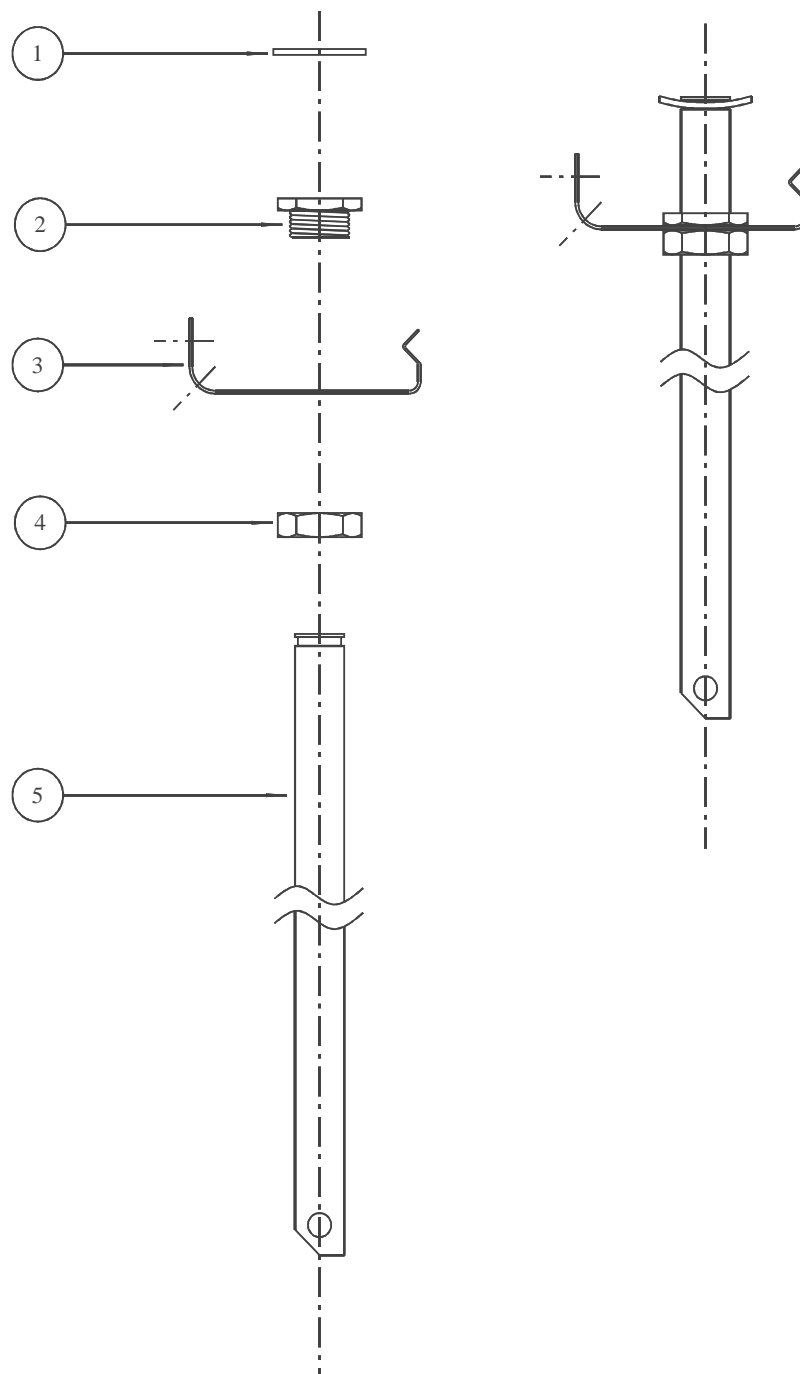


Item	Part No.	Description	Qty
1.	2090015	Venturi Body V55	1
2.	2090016	Venturi Jet, Std V55	1
3.	2090003	Venturi Insert 11.5mm OD	1
4.	2090004	Venturi Tail 12.5mm ID	1
5.	2090006	Venturi Liner Tube	1
6.	2090026	V55T Banjo Bolt	1
7.	9000845	Washer, 1/8 BSP, Blue Nylon	1
8.	9000853	Washer, 1/8 BSP Red Nylon	1
9.	9001083	1/8 BSP Male Plug	2
10.	9000272	Quick Release Air Fitting, Female	2
11.	9001253	Female Single Banjo Body	1
12.	9001306	Nylon Spacer (5mm)	1
13.	9001307	Nylon Washer	1

Venturi Mounting Kit (Auto) Assembly

Part No. 2090030

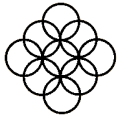
Illustration No. 6000172



Item	Part No.	Description	Qty
1	5000010	Venturi Seal	1
2	5000026	Venturi Spigot	1
3	2090025	V55T Venturi Mounting Clip, Tri-Point	1
4	5000009	Nut 1/2 BSP	1
5	2090020	Lift Tube, Auto	1

705

NOTES:



eurotec[™]
FINISHING SYSTEMS